



METAL BUILDING
14,280 s.f.

MAIN BUILDING
71,593 s.f.

4850

South 5300 West

Kearns, UT 84118

85,837 s.f on 10.68 acres

**Production & Distribution Facility
Located in Opportunity Zone**

**For Sale
or Lease**

Culum J. Mills
+1 801 456 9526
culum.mills@am.jll.com

Wick Udy
+1 801 456 9523
wick.udy@am.jll.com

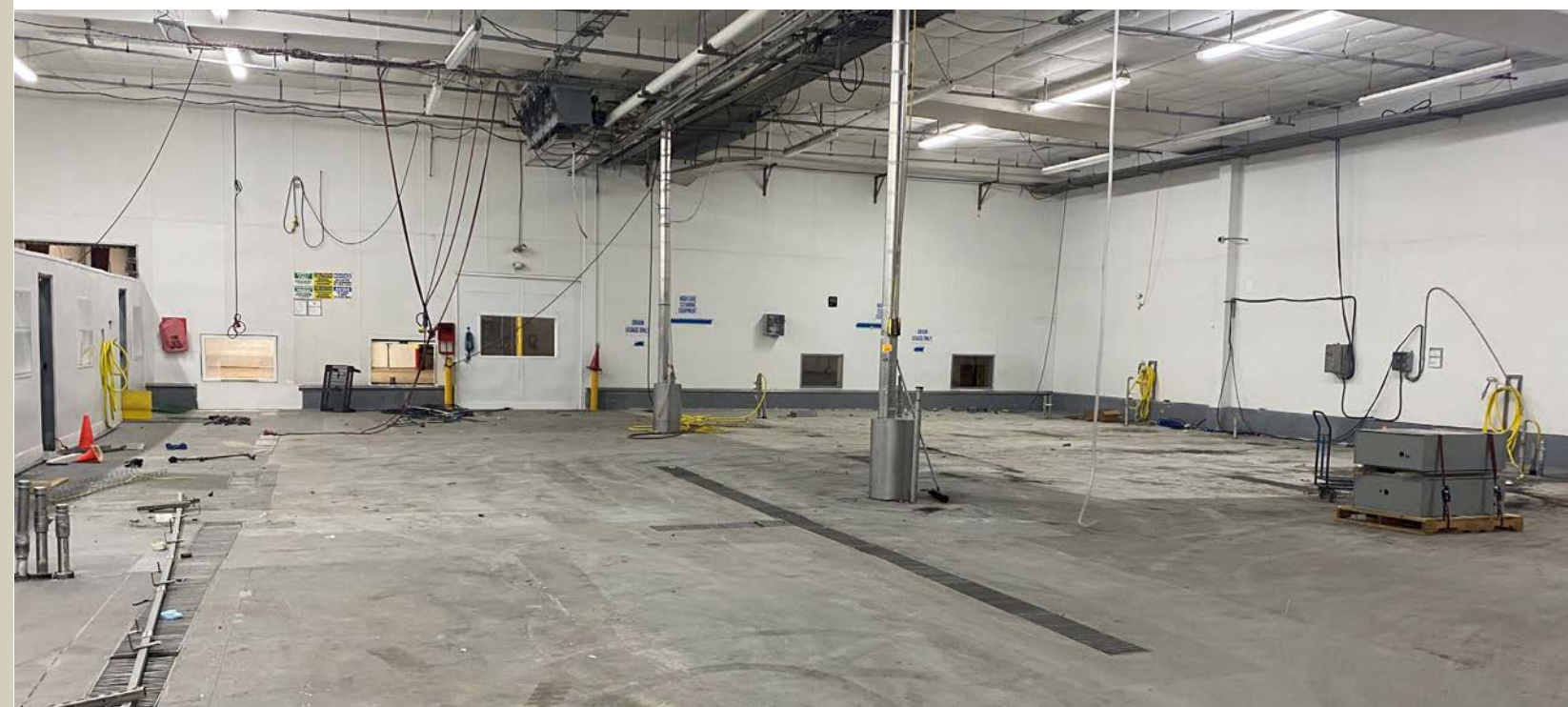
Rhett Rasmussen
+1 480 828 1528
rhett.rasmussen@am.jll.com



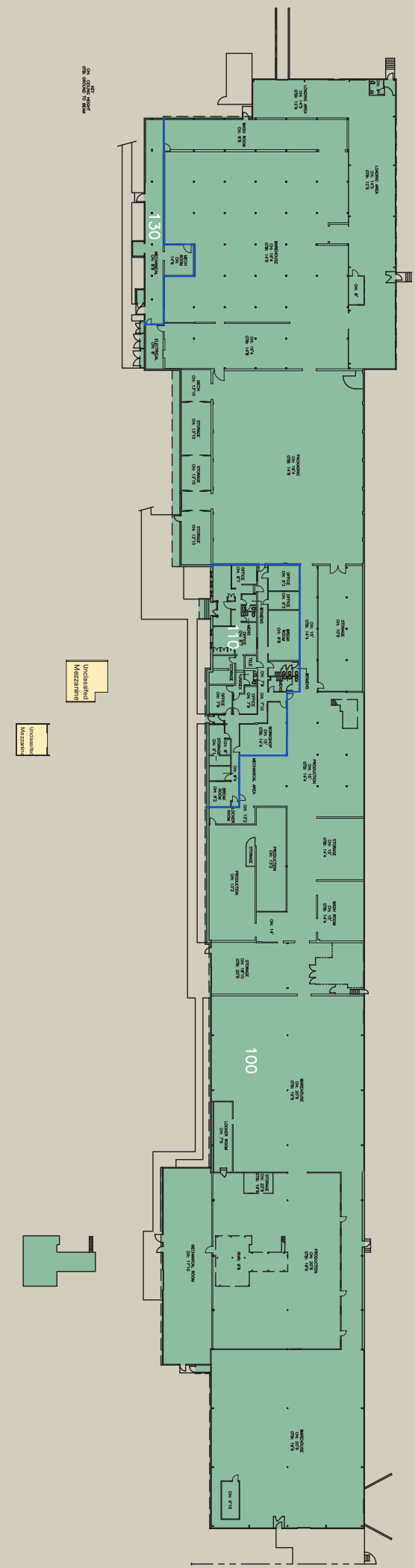
Jones Lang LaSalle Brokerage, Inc.

Property Specifications

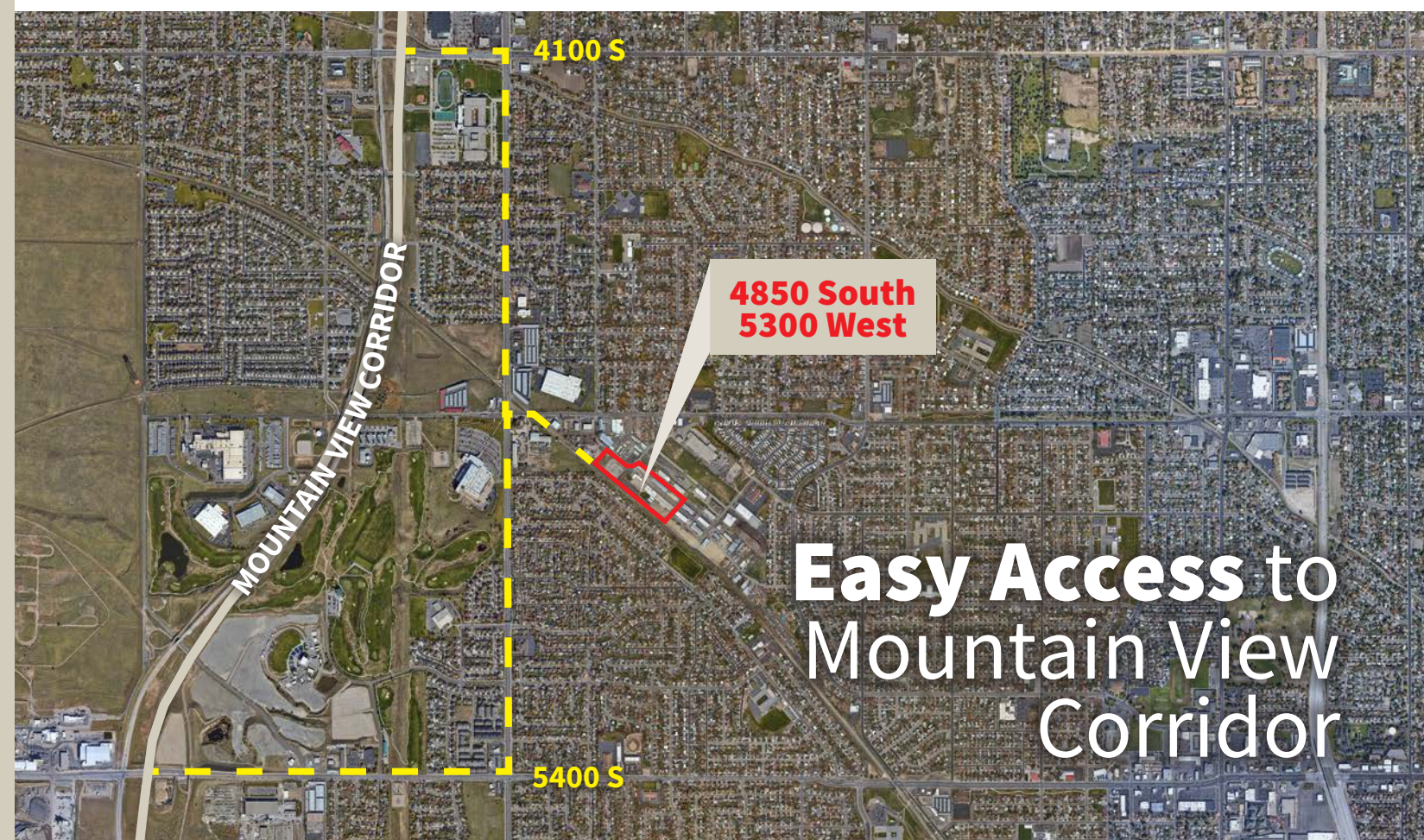
MAIN BUILDING SF:	71,593 s.f. (+/- 5,000 s.f. office)
METAL BUILDING SF:	14,280 s.f.
SITE ACREAGE:	10.68 acres
YEAR BUILT:	1993
BUILDING COVERAGE:	15.39%
CONSTRUCTION TYPE:	CMU/metal
ZONING:	Salt Lake City M-1
OPPORTUNITY ZONE:	Yes
CLEAR HEIGHT:	11'-20"
SPRINKLERS:	Six, 6" lines which are fed through backflow preventers in four separate locations throughout. Water distribution via steel fire rated piping system throughout building(s). Dry sprinklers serve the cooler areas. Wet pipe sprinklers serve the offices.
ROOF:	Built up, three-ply roof/TPO/modified bituminous roof/metal
LIGHTS:	LED throughout
EMPLOYEE PARKING:	127 stalls including ADA stalls
TRUCK PARKING:	Adjacent gravel parking lot
DOCK DOORS:	15 fully equipped dock doors
DRIVE IN DOORS:	3 drive-in doors, Two (2) 8'x10' and One (1) 4'x8'
POWER SERVICE/CAPACITY:	One main is 1200 amp, three phase, four wire, 277/480V; other main is 600 amp three phase, four wire, 120/240V
SECURITY:	Fully fenced and secured site



Main Building Floor Plan

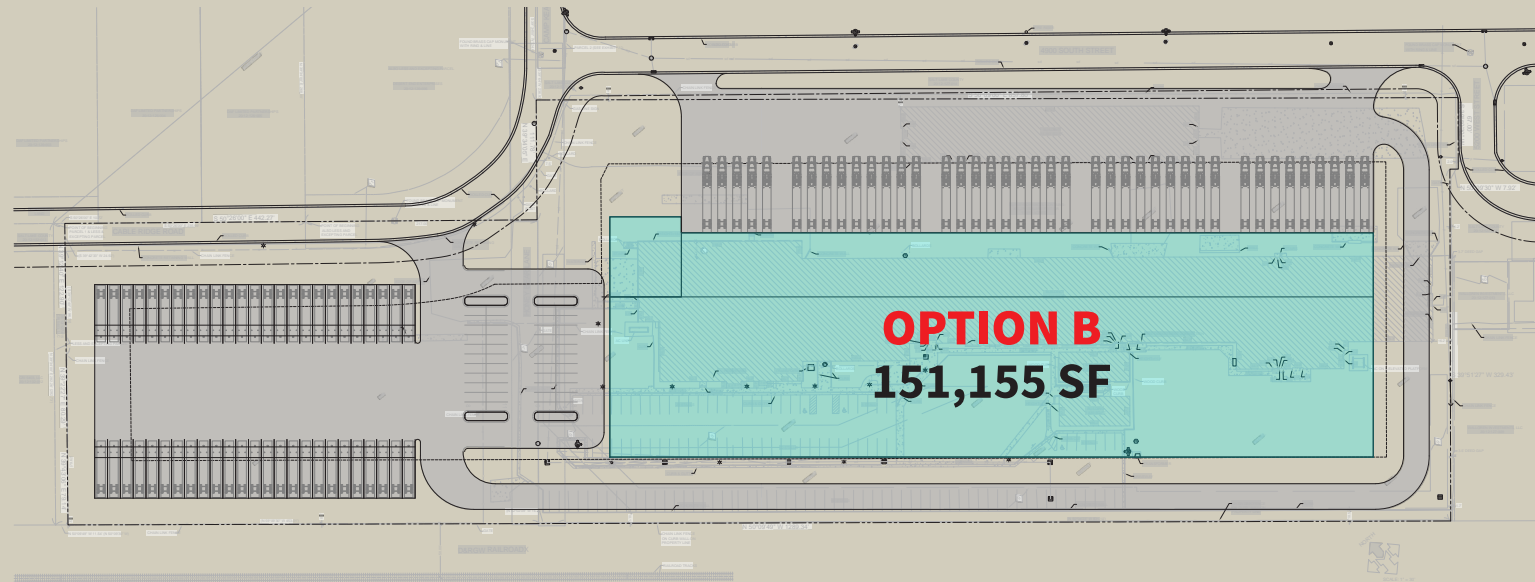
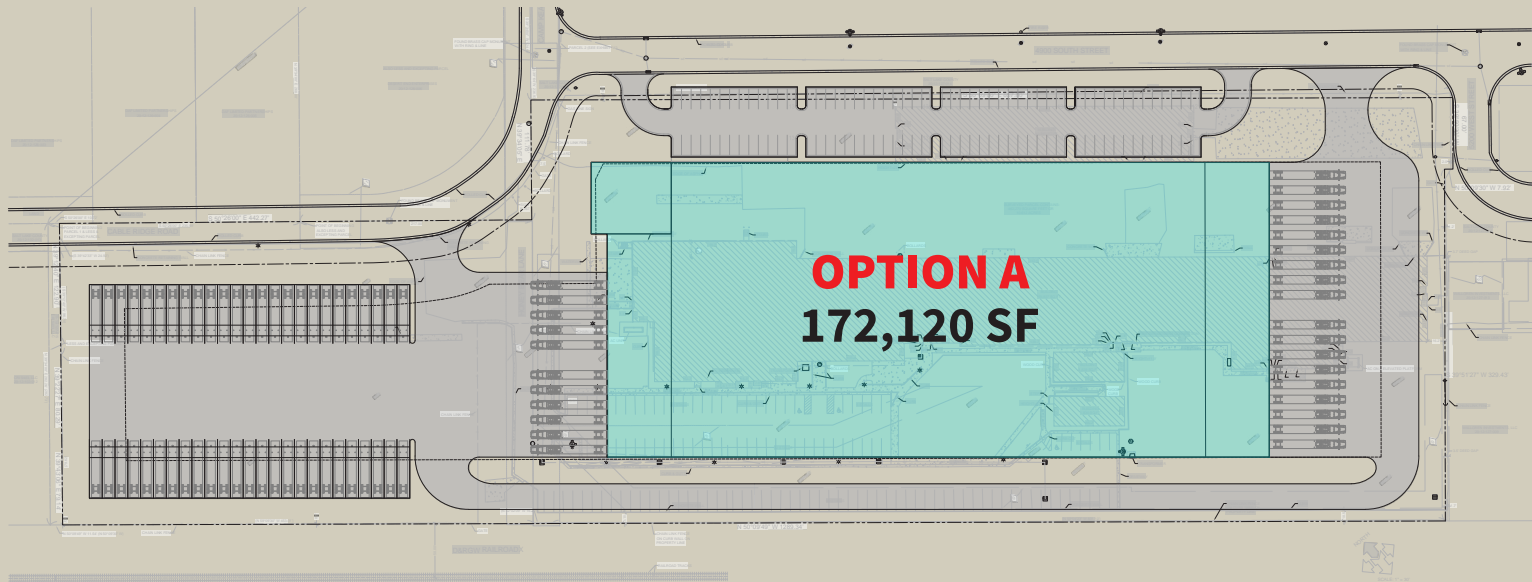


Parcel Map



Easy Access to Mountain View Corridor

Build to Suit Opportunity





For more information, please contact:

Culum J. Mills
+1 801 456 9526
culum.mills@am.jll.com

Wick Udy
+1 801 456 9523
wick.udy@am.jll.com

Rhett Rasmussen
+1 480 828 1528
rhett.rasmussen@am.jll.com



Jones Lang LaSalle Brokerage, Inc.

©2022 Jones Lang LaSalle LP, Inc. All rights reserved. All information contained herein is from sources deemed reliable; however, no representation or warranty is made to the accuracy thereof.